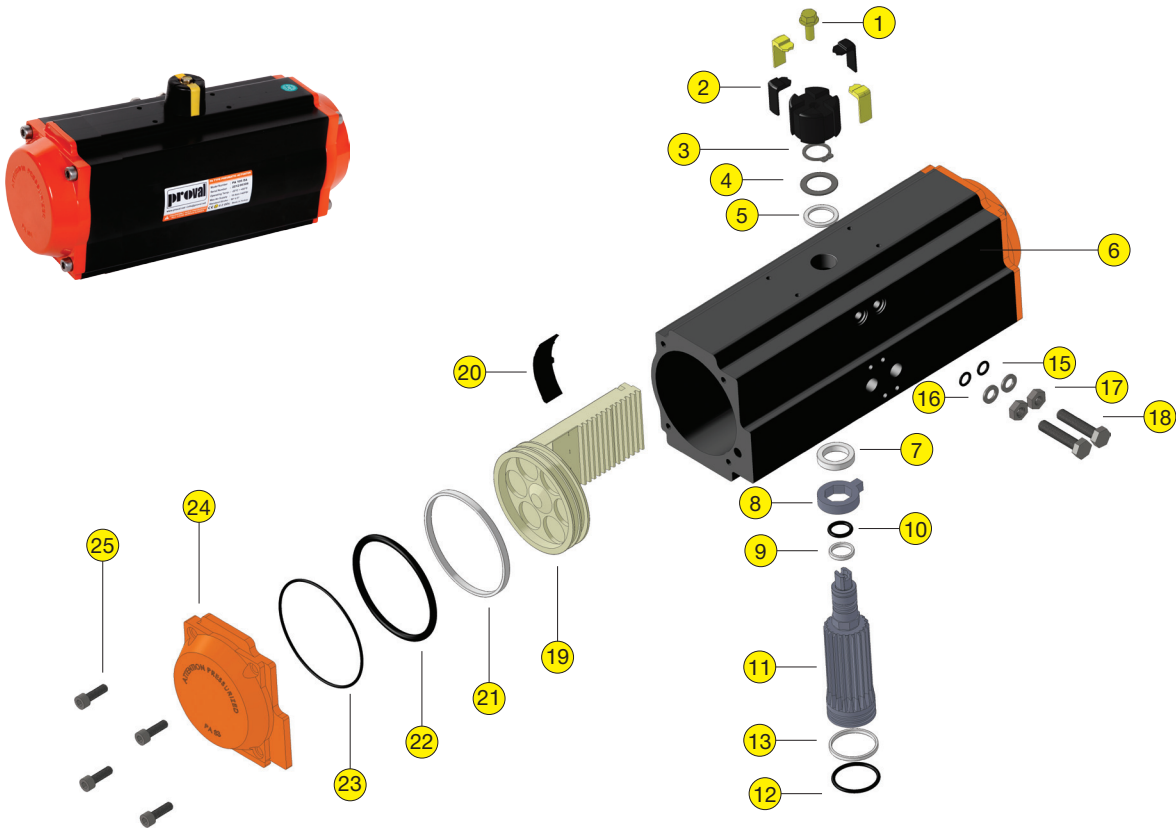


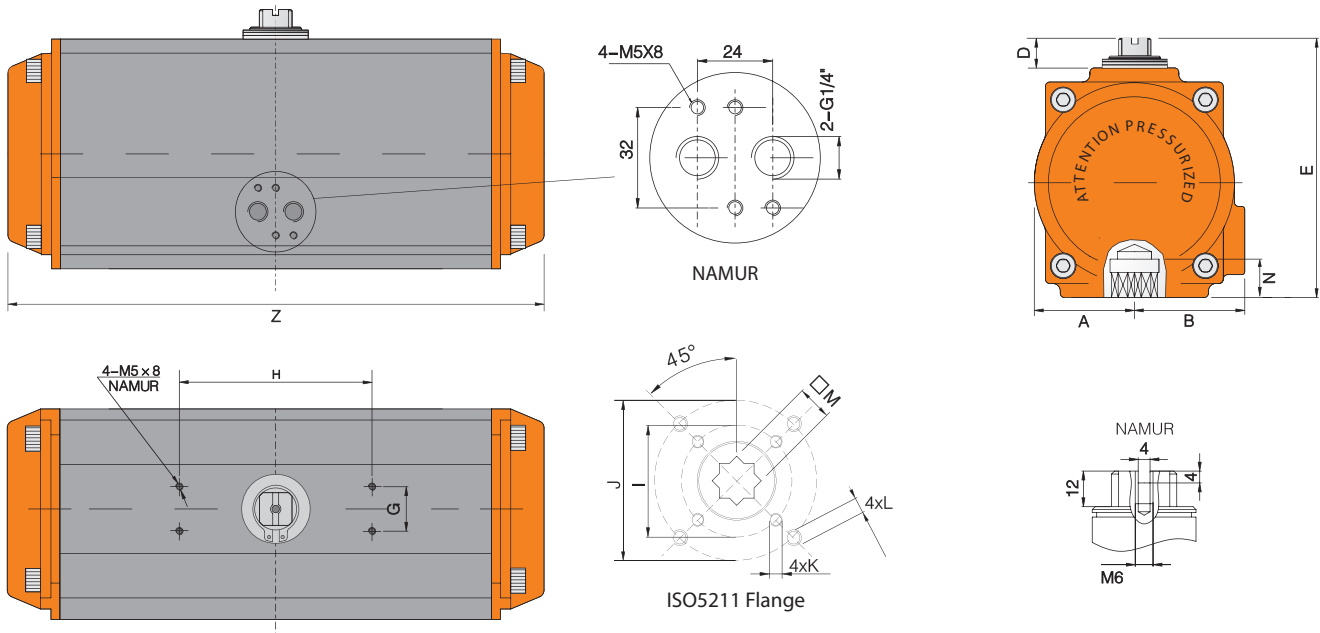


A212 Series 120°~180° Double Act. Pneumatic Actuators Part List



No.	Description	Qty	Standard Material	Protection	Optional Material
1	Indicator Screw	1	Carbon Steel	Galvanizing	Stainless Steel
2	Indicator	1	Plastic		
3	Circlip	1	Stainless Steel		
4	Metal Washer	1	Stainless Steel		
5	Washer	1	Engineering Plastics		
6	Body	1	Extruded Aluminum Alloy	Hard Anodizing	Polyester, ENP, PFA, ECTFE Coatings
7	Inner Washer	1	Engineering Plastics		
8	Cam	1	Alloy Steel	Galvanizing	
9	Pinion Upper Bearing	1	Engineering Plastics		Viton/Silicon
10	Pinion Upper O-Ring	1	NBR		
11	Pinion	1	Alloy steel	Nickel plated	Stainless Steel
12	Pinion Lower O-Ring	1	NBR		
13	Pinion Lower Bearing	1	Engineering Plastics		
14	Sealant	2	NBR		Viton/Silicon
15	Adjustment Screw O-Ring	2	NBR		Viton/Silicon
16	Washer (Adjustment Screw)	2	Stainless Steel		
17	Nut (Adjustment Screw)	2	Stainless Steel		
18	Limit Adjustment Screw	2	Stainless Steel		
19	Piston	2	Aluminum Die Cast	Chromatized & Coating	Stainless Steel
20	Slide Piston	2	Engineering Plastics		
21	Slide Guide	2	Engineering Plastics		
22	Piston O-Ring	2	NBR		Viton/Silicon
23	End Cap O-Ring	2	NBR		Viton/Silicon
24	End Cap	2	Cast Aluminum	Chromatized & Polyester	ENP, PFA, ECTFE Coatings
25	Cap Screw	8	Stainless Steel		

A212 Series 120°~180° Double Act. Pneumatic Actuators Dimensions



Dimensions (mm)	Model	A	B	D	E	G	H	ISO5211 Flange	I	J	K	L	M	N	Z 120°	Z 180°	Air Supply
	PA 52	30	42	20	92	30	80	F03+F05	ø36	ø50	M5x8	M6x10	9-11	14	166	223	G1/4"
	PA 63	36	47	20	108	30	80	F03*+F05+F07	ø50	ø70	M6x10	M8x13	9-11-14	18	179	246	G1/4"
	PA 75	42	53	20	120	30	80	F05+F07	ø50	ø70	M6x10	M8x13	11-14	18	200	269	G1/4"
	PA 83	46	57	20	129	30	80	F05+F07	ø50	ø70	M6x10	M8x13	14-17	21	222	307	G1/4"
	PA 92	50	59	20	137	30	80	F05+F07	ø50	ø70	M6x10	M8x13	14-17	21	273	374	G1/4"
	PA 105	58	64	20	153	30	80	F07+F10	ø70	ø102	M8x13	M10x16	17-22	26	291	405	G1/4"
	PA 125	68	75	20	175	30	80	F07+F10	ø70	ø102	M8x13	M10x16	22	26	327	455	G1/4"
	PA 140	75	77	20	192	30	80	F10+F12	ø102	ø125	M10x16	M12x20	27	31	426	597	G1/4"
PA 160	87	87	20	217	30	80	F10+F12	ø102	ø125	M10x16	M12x20	27	31	491	691	G1/4"	

* On request.

Torque Output Values (Nm)	Model	Air Supply Pressure (bar)									
		2	2,5	3	4	4,5	5	5,5	6	7	8
	PA 52DA	8	10	12	16	18	20	22	28	30	34
	PA 63DA	15	19	22	30	33	37	40	44	52	58
	PA 75DA	20	26	30	40	45	50	55	60	70	80
	PA 83DA	33	40	48	63	71	79	86	94	110	125
	PA 92DA	45	57	68	90	102	113	124	136	158	182
	PA 105DA	66	83	100	132	149	166	182	200	232	265
	PA 125DA	101	126	151	202	226	252	276	301	352	402
	PA 140DA	171	214	257	342	385	428	471	513	599	684
	PA 160DA	266	333	399	532	600	665	732	798	932	1064

A212 - 120° Air Consumption of Actuators (Lt/Stroke)

Model	PA 52	PA 63	PA 75	PA 83	PA 92	PA 105	PA 125	PA 140	PA 160
Opening	0,14	0,25	0,36	0,51	0,78	1,09	1,76	2,73	3,73
Closing	0,19	0,27	0,40	0,56	0,89	1,18	2,02	3,10	4,31

A212 - 180° Air Consumption of Actuators (Lt/Stroke)

Model	PA 52	PA 63	PA 75	PA 83	PA 92	PA 105	PA 125	PA 140	PA 160
Opening	0,19	0,32	0,47	0,68	1,06	1,51	2,49	3,80	4,79
Closing	0,26	0,35	0,53	0,74	1,20	1,63	2,85	4,31	5,53

Actuator Weights (Kg/Pc)

Model	PA 52	PA 63	PA 75	PA 83	PA 92	PA 105	PA 125	PA 140	PA 160
A212 - 120°	1,5	2,2	2,9	3,5	5,5	6,5	9,5	13	20
A212 - 180°	1,8	2,7	3,5	4,3	6,5	7,5	11,5	15,5	25,5