

valvole ad azionamento pneumatico

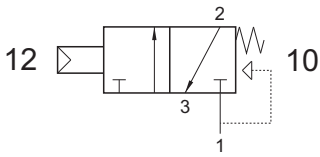
pneumatically piloted valves



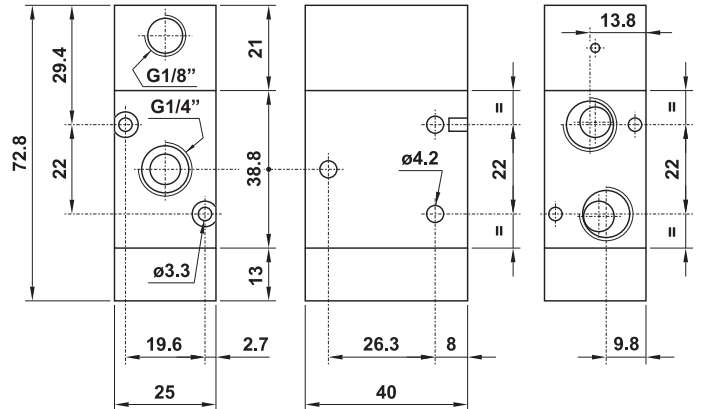
322 MC

3/2 1/4" NC comando pneumatico - ritorno a molla

3/2 1/4" NC pneumatic pilot - spring return



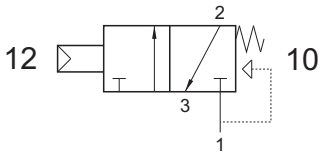
Non può essere utilizzata come valvola normalmente aperta.
It cannot be used as normally open valve.



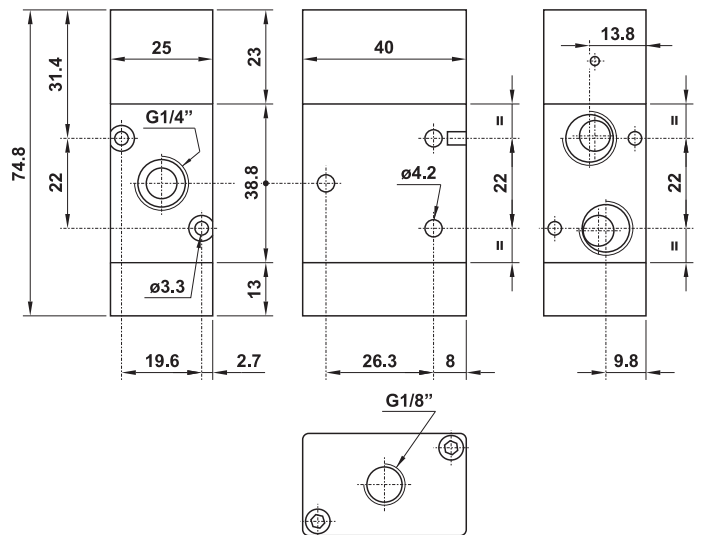
322 MC SUP

3/2 1/4" NC comando pneumatico attacco superiore - ritorno a molla

3/2 1/4" NC pneumatic pilot on the top - spring return



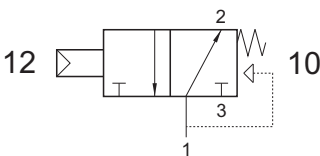
Non può essere utilizzata come valvola normalmente aperta.
It cannot be used as normally open valve.



322 MCA

3/2 1/4" NA comando pneumatico - ritorno a molla

3/2 1/4" NO pneumatic pilot - spring return



Non può essere utilizzata come valvola normalmente chiusa.
It cannot be used as normally closed valve.

