

valvole ad azionamento elettropneumatico

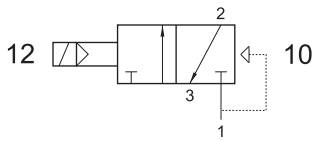
solenoid actuated valves



322 EFP

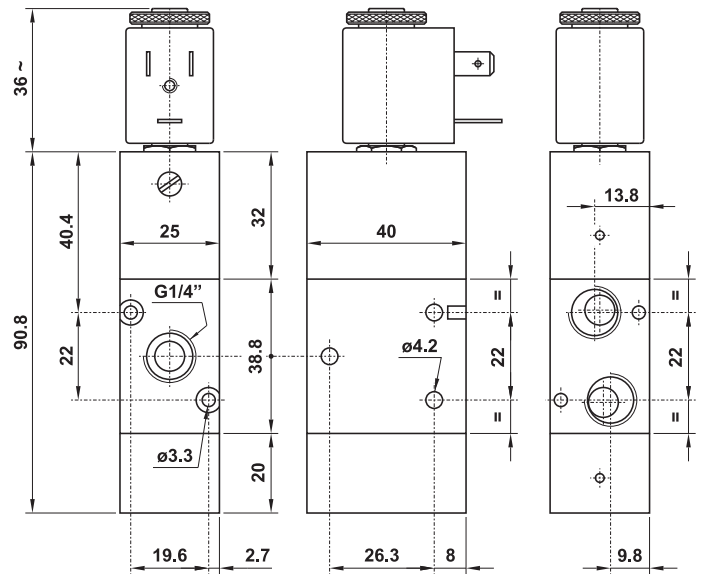
3/2 1/4" NC comando elettrico - ritorno a molla pneumatica

3/2 1/4" NC solenoid pilot - pneumatic spring return



Non può essere utilizzata come valvola normalmente aperta.
It cannot be used as normally open valve.

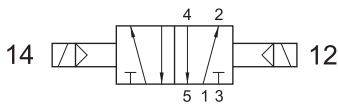
SOLO VERSIONE IN ALLUMINIO
ONLY ALUMINIUM VERSION



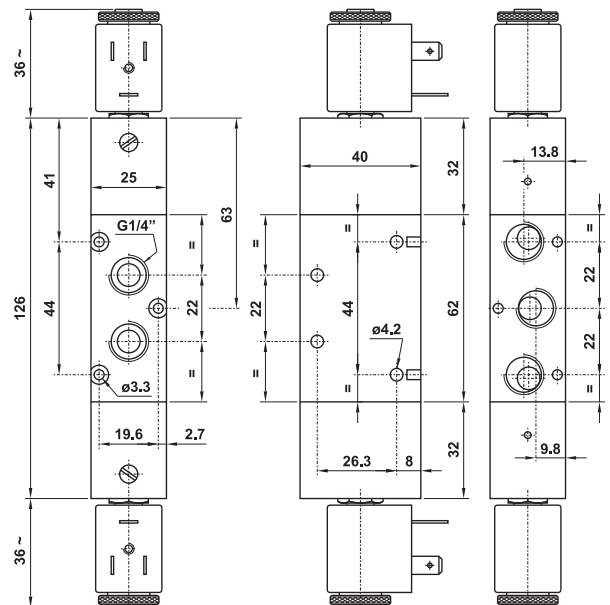
522 EE

5/2 1/4" doppio comando elettrico

5/2 1/4" double solenoid pilot



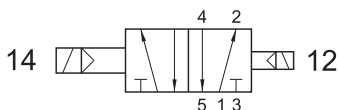
SOLO VERSIONE IN ALLUMINIO
ONLY ALUMINIUM VERSION



522 EED

5/2 1/4" doppio comando elettrico - con differenziale

5/2 1/4" double solenoid pilot - with differential



SOLO VERSIONE IN ALLUMINIO
ONLY ALUMINIUM VERSION

