

valvole G1/2" azionamento manuale

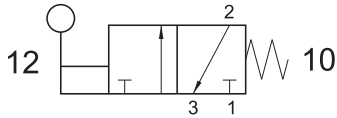
manually actuated valves - G1/2"



324 ML90

3/2 1/2" leva 90° - ritorno a molla

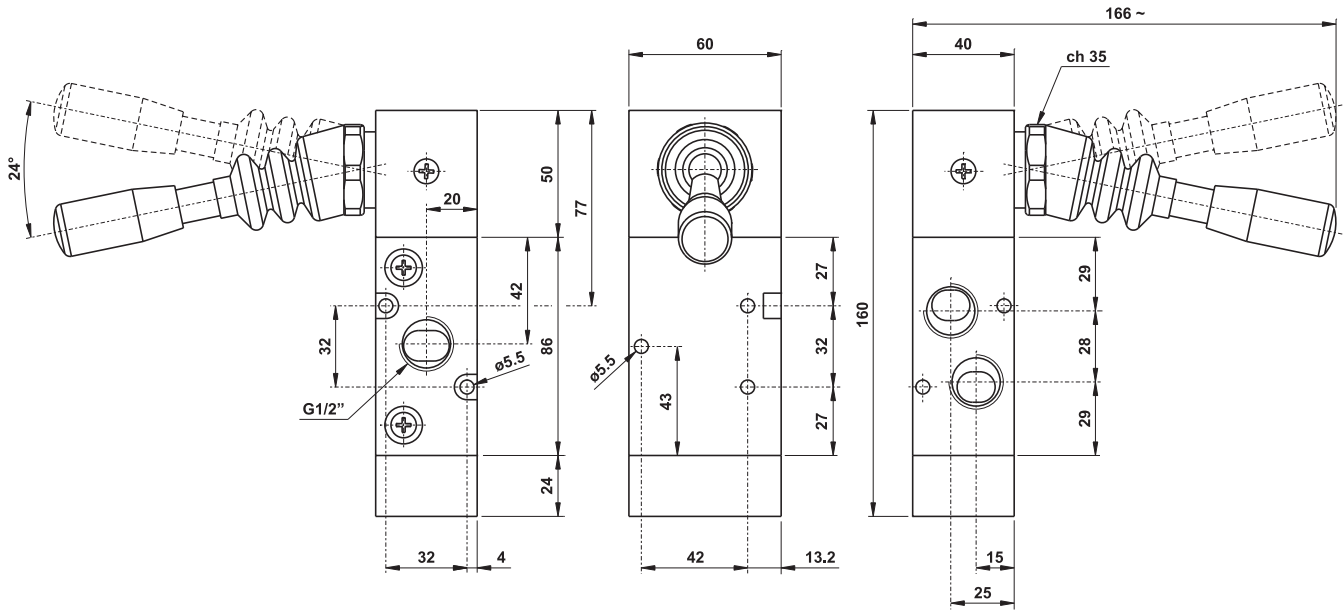
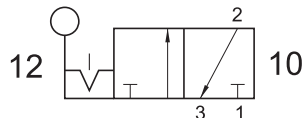
3/2 1/2" 90° lever - spring return



324 LL90

3/2 1/2" leva 90° bistabile

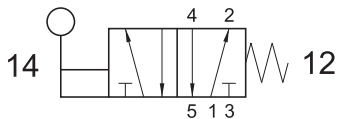
3/2 1/2" 90° bi-stable lever



524 ML90

5/2 1/2" leva 90° - ritorno a molla

5/2 1/2" 90° lever - spring return



524 LL90

5/2 1/2" leva 90° bistabile

5/2 1/2" 90° bi-stable lever

