

valvole ad azionamento pneumatico

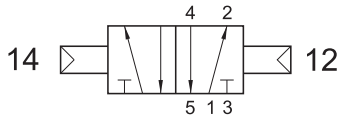
pneumatically piloted valves



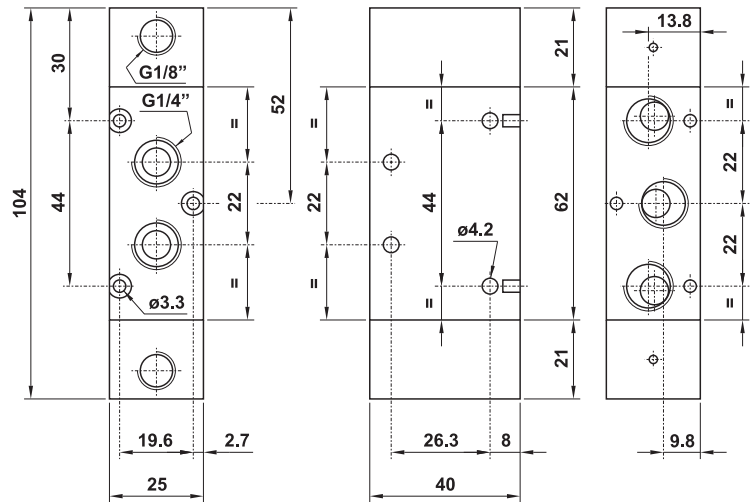
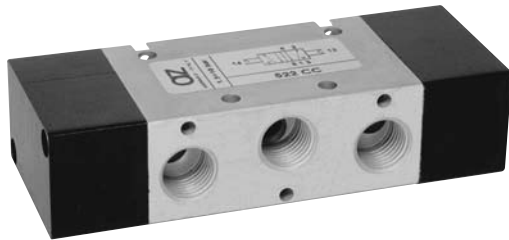
522 CC

5/2 1/4" doppio comando pneumatico

5/2 1/4" double pneumatic pilot



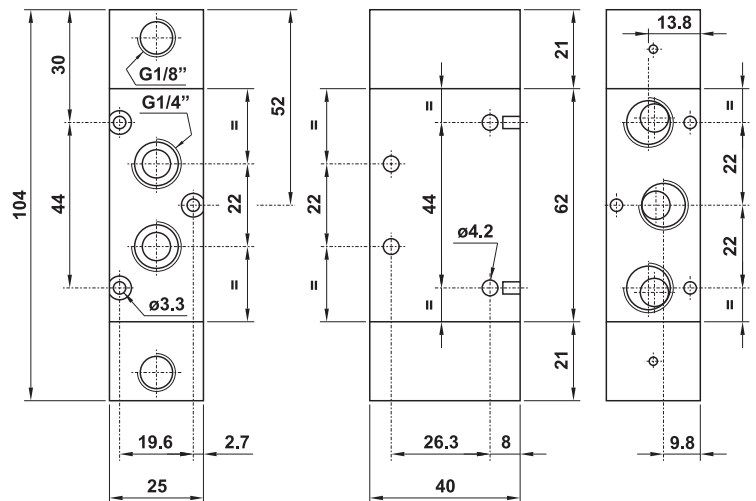
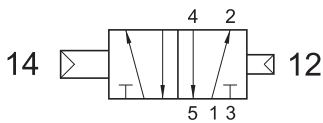
Può essere utilizzata con vuoto.
It can be used with vacuum.



522 CCD

5/2 1/4" doppio comando pneumatico - con differenziale

5/2 1/4" double pneumatic pilot - with differential



522 CFP

5/2 1/4" comando pneumatico - ritorno a molla pneumatica

5/2 1/4" pneumatic pilot - pneumatic spring return

