

THP 系列二位二通电磁阀(常闭型) THP Series 2/2 Solenoid Valve (Normal Close)



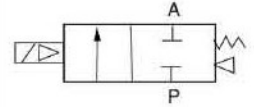
THP/THP-S2 Series

THP/THP-S2 系列

244



New
Teflon Seal
+25 Bar



订货举例 How to Order?

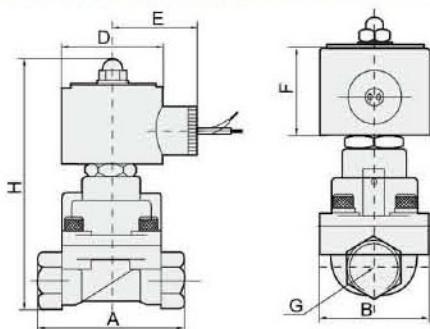
THP	--	06	--	E2	--	2.5L	--	S2	--		--	
THP系列 THP series		接管口径 Port size		电压 Voltage E1: AC110V E2: AC220V E3: AC380V E4: DC24V E5: DC12V E6: AC36V E7: AC24V E8: DC110V E9: DC48V E10: DC36V		密封材料 空白: NBR 丁腈橡胶 T: Teflon 聚四氟乙烯 V: VITON 氟橡胶 E: EPDM 乙丙橡胶 (N,V,E φ 5.5mm以下可选)		流量孔径 Orifice(mm) 2.5L: 2.5 4.5L: 4.5 15L: 15.0 20L: 20.0 25L: 25.0 35L: 35.0 40L: 40.0 50L: 50.0		阀体材质 空白: 铜阀体 S1: SS316不锈钢阀体 S2: SS304不锈钢阀体		线圈型式 空白: DIN接线盒式 F: 引出线式 Coil type Blank: DIN connector F: Flying leads
		25F: 1"法兰连接 Flange 35F: 1-1/4"法兰连接 Flange 40F: 1-1/2"法兰连接 Flange 50F: 2"法兰连接 Flange		Seal material Blank: NBR T: Teflon V: VITON E: EPDM (N,V,E orifice ≤ φ 5.5mm optional)		如孔径与口径一致, 型号中流量标识省略 Cancel if same with port size		控制方式 空白: 常闭 H: 常开 Control style Blank: Normal close H: Normal open				

- * THP系列, 二位二通, 接管口径1/8", AC110V, 丁腈橡胶密封件, 流量孔径 2.5mm, 铜阀体, 常闭, DIN线圈, 型号: THP06E1-2.5L
- * THP系列, 二位二通, 接管口径3/8", AC220V, 聚四氟乙烯密封件, 流量孔径 15mm, SS304阀体, 常开, 引出线线圈, 型号: THP10TE2-15LS2HF
- * THP series, 2 port, 2 position, 1/8" port size, AC110V, NBR seal, orifice: 2.5mm, brass valve body, normal close, DIN coil, model: THP06E1-2.5L
- * THP series, 2 port, 2 position, 3/8" port size, AC220V, teflon seal, orifice: 15mm, SS304 valve body, normal open, flying leads coil, model: THP10TE2-15LS2HF

产品特性 Product Features

- * 二位二通常闭电磁阀, 阀体材质: 铜、不锈钢304、不锈钢316
- * 有多种密封件可供选择, 以适合不同的介质
- * 接管口径从1/8"到2"
- * 可配接线盒式线圈和引出线式线圈, 有螺纹连接和法兰连接可以选择
- * 活塞先导式, 耐高温高压
- * Normal close, available body: brass, SS304, SS316
- * Multiple seals are available for different medium
- * Wide size range from 1/8" to 2"
- * DIN style / flying leads coil, thread / flange connection
- * Piston pilot solenoid valve with high working pressure and temperature

外形尺寸图 Main Dimensions (mm)



流量特性表 Flow Chart

