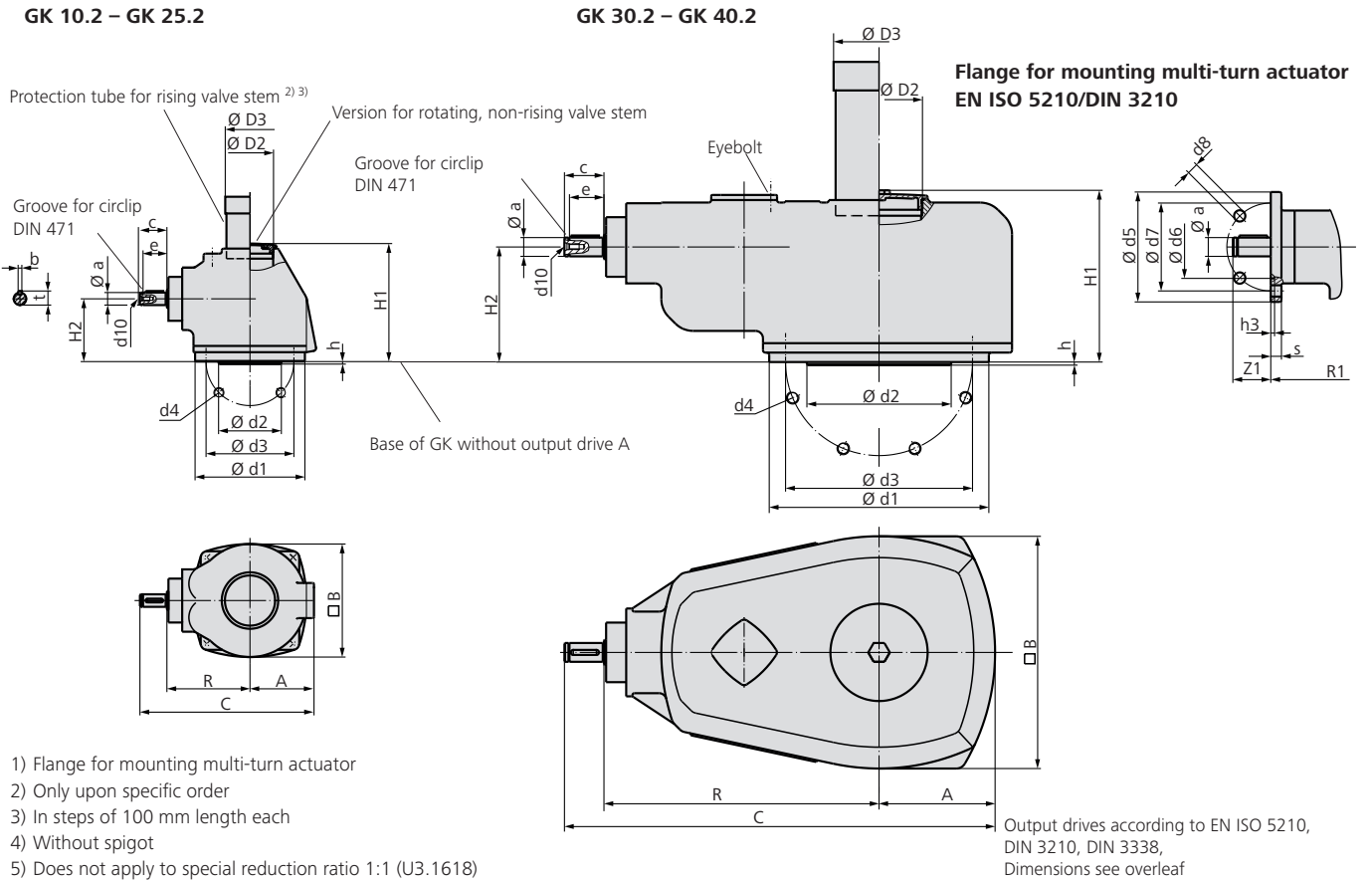


Dimensions Bevel gearboxes



- 1) Flange for mounting multi-turn actuator
- 2) Only upon specific order
- 3) In steps of 100 mm length each
- 4) Without spigot
- 5) Does not apply to special reduction ratio 1:1 (U3.1618)

Output drives according to EN ISO 5210, DIN 3210, DIN 3338, Dimensions see overleaf

Dimensions	GK 10.2	GK 14.2	GK 14.6	GK 16.2 ⁵⁾	GK 25.2	GK 30.2	GK 35.2	GK 40.2
EN ISO 5210/DIN 3210	F10 (G0)	F14 (G1/2)	F14 (G1/2)	F16 (G3)	F25 (G4)	F30 (G5)	F35 (G6)	F40 (G7 ⁴⁾)
A	74	99	99	130	185	185	225	250
□ B	130	180	180	230	340	370	450	500
C	225	274/294	274/294	359	486	686/706	792	870
Ø D2	G 2 "	G 2 ½ "	G 2 ½ "	G 3 "	G 4 "	G 5 "	M190 x 3	M220 x 3
Ø D3	60 x 3.7	76 x 3.7	76 x 3.7	89 x 4.1	114 x 4.5	139.7 x 4.85	193.7 x 6.3	219.1 x 6.3
H1	170	188	188	202	234	273	334	349
H2	77	100	100	113	128	183	231	247
R	108	133/135	133/135	169	241	438/448	492	546
R1	110	135	135	169	241	441	486	540
Z1	40	40/60	40/60	60	60	60/80	80	80
Ø a	20	20/30	20/30	30	30	30/40	40	40
b	6	6/8	6/8	8	8	8/12	12	12
c	42	42/60	42/60	60	60	63/73	73	73
Ø d1	125	175	175	210	300	350	415	475
Ø d2	70(60)	100	100	130	200 (160)	230 (180)	260 (220)	300 ⁴⁾
Ø d3	102	140	140	165	254	298 (300)	356	406
d4	4 x M10	4 x M16	4 x M16	4 x M20	8 x M16	8 x M20	8 x M30	8 x M36
d10	M6	M6/M10	M6/M10	M10	M10	M10/M16	M16	M16
e	38	38/55	38/55	55	55	55/65	65	65
h	3	4	4	5	5	5	5	5 ⁴⁾
t	22.5	22.5/33	22.5/33	33	33	33/43	43	43
EN ISO 5210 ¹⁾	F10/F14	F10/F14	F10/F14	F14	F14/F16	F14/F16	F14/F16/F25	F16/F25
DIN 3210 ¹⁾	G0/G1/2	G0/G1/2	G0/G1/2	G1/2	G1/2/G3	G1/2/G3	G1/2/G3/G4	G3/G4

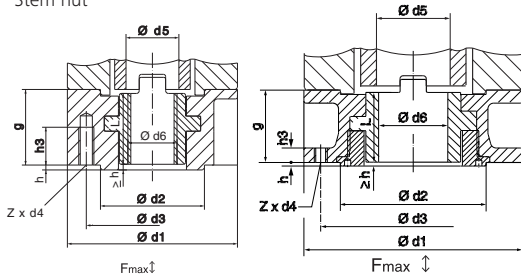
Flange for mounting multi-turn actuator

EN ISO 5210	F10	F14	F16	F25
DIN 3210		G0	G1/2	G3
Ø d5	125	175	210	300
Ø d6	70	100	130	200
Ø d7	102	140	165	254
Ø d8	11	18	22	18
h3	5	5	6	6
s	12	17	25	28

We reserve the right to alter data according to improvements made. Previous documents become invalid with the issue of this document.

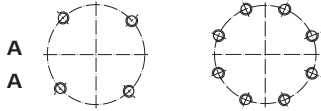
Dimensions Valve attachments according to EN ISO 5210, DIN 3210

Stem nut



GK 10.2 – GK 16.2 GK 25.2 – GK 40.2

Type
EN ISO 5210
DIN 3210

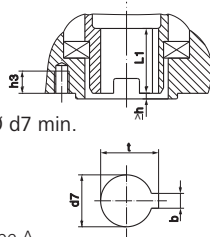


Arrangement of bores d4

Dimensions		GK 10.2		GK 14.2/GK 14.6		GK 16.2		GK 25.2		GK 30.2		GK 35.2		GK 40.2	
EN ISO 5210	DIN 3210	F10	G0	F14	G1/2	F16	G3	F25	G4	F30	G5	F35	G6	F40	G7
F max. kN		70		160		250		380		460		875		1375	
Ø d1		125		175		210		300		350		415		475	
Ø d2		70	60	100		130		200	160	230	180	260		300	
Ø d3		102		140		165		254		298	300	356		406	
d4		M10		M16		M20		M16		M20		M30		M36	
Ø d5		42		60		80		100		120		160		180	
Ø d6 max.		40		57		75		95		115		155		175	
g		50		65		80		130		160		185		225	
h		3		4		5		5		5		5		8	
h3		15		25		35		20		25		38		45	
L		47		60		75		126		156		175		210	
Z		4		4		4		8		8		8		8	
Weight kg		2.8		6.8		11.7		42		69		125		200	

Output drive plug sleeve ³⁾

Type
EN ISO 5210 **B 1 = Ø d7**
EN ISO 5210 **B 2 < Ø d7 > Ø d7 min.**
DIN 3210 **B = Ø d7**

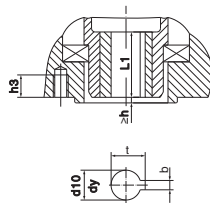


For missing dimensions, refer to type A

Dimensions		GK 10.2		GK 14.2/GK 14.6		GK 16.2		GK 25.2		GK 30.2		GK 35.2		GK 40.2	
EN ISO 5210	DIN 3210	F10	G0	F14	G1/2	F16	G3	F25	G4	F30	G5	F35	G6	F40	G7
b JS 9 ¹⁾		12		18		22		28		32		40		45	
d7 H9		42		60		80		100		120		160		180	
Ø d7 min.		30		45		60		75		90		120		140	
h3		15		25		30		28		30		50		60	
L1		45		65		80		110		130		180		200	
t ¹⁾		45.3		64.4		85.4		106.4		127.4		169.4		190.4	

Bore with keyway

Type
EN ISO 5210 **B 3 = Ø d10**
EN ISO 5210 **B 4 ≤ Ø dy**
DIN 3210 **E = Ø d10**

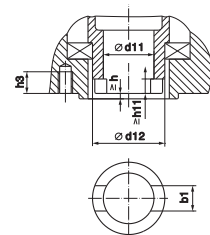


For missing dimensions, refer to type A

Dimensions		GK 10.2		GK 14.2/GK 14.6		GK 16.2		GK 25.2		GK 30.2		GK 35.2		GK 40.2	
EN ISO 5210	DIN 3210	F10	G0	F14	G1/2	F16	G3	F25	G4	F30	G5	F35	G6	F40	G7
b JS 9 ¹⁾		6		8		12		14		18		22		28	
Ø d10 H9		20		30		40		50		60		80		100	
Ø dy max.		30		45		60		75		90		120		140	
h3		15		25		30		28		30		50		60	
L1		45		65		80		110		130		180		200	
t ¹⁾		22.8		33.3		43.3		53.8		64.4		85.4		106.4	
Weight kg		0.4		1.1		2.4		5.1		8.6		21.2		27.5	

Dog coupling ³⁾

Type
DIN 3338 **C = Ø d11**

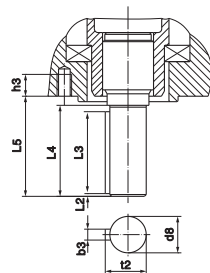


For missing dimensions, refer to type A

Dimensions		GK 10.2		GK 14.2/GK 14.6		GK 16.2		GK 25.2		GK 30.2		GK 35.2		GK 40.2	
EN ISO 5210	DIN 3210	F10	G0	F14	G1/2	F16	G3	F25	G4	F30	G5	F35	G6	F40	G7
b1 H11		14		20		24		30		40		45		50	
Ø d11 H11		28		38		47		64		75		105		125	
Ø d11 min.		20		30		40		50		60		80		100	
Ø d11 max. ²⁾		42		60		80		100		120		160		180	
Ø d12		55		80		100		130		160		200		230	
h3		15		25		30		28		30		50		60	
h11		7		8		10		11		13		17		20	

Shaft end

Type
DIN 3210 **D**



For missing dimensions, refer to type A

Dimensions		GK 10.2		GK 14.2/GK 14.6		GK 16.2		GK 25.2		GK 30.2		GK 35.2		GK 40.2	
EN ISO 5210	DIN 3210	F10	G0	F14	G1/2	F16	G3	F25	G4	F30	G5	F35	G6	F40	G7
Ø d8 g6		20		30		40		50		60		80		100	
b3 h9		6		8		12		14		18		22		28	
h3		15		25		30		28		30		50		60	
L2		1.5		2		3		3		3		3		3	
L3		45		63		80		100		110		110		140	
L4		50		70		90		110		120		120		150	
L5		55		76		97		117		126		125		162	
t2		22.5		33		43		53.5		64		85		106	
Weight kg		0.7		2		4.3		9		15		34		50	

1) Dimensions depend on Ø d7/ Ø d10, refer to DIN 6885-1

2) For rising valve stem Ø d11 max. = Ø d5 of type A

3) Weight included in actuator

We reserve the right to alter data according to improvements made. Previous documents become invalid with the issue of this document.